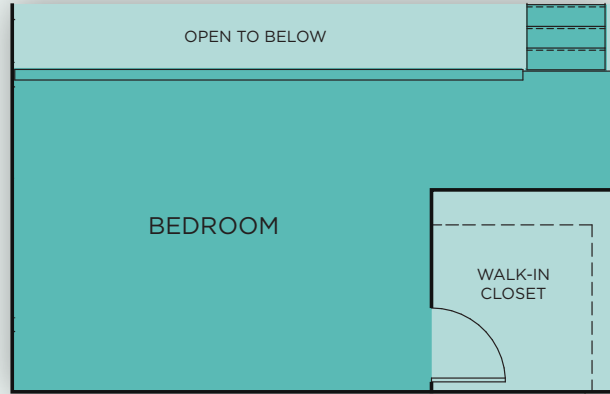


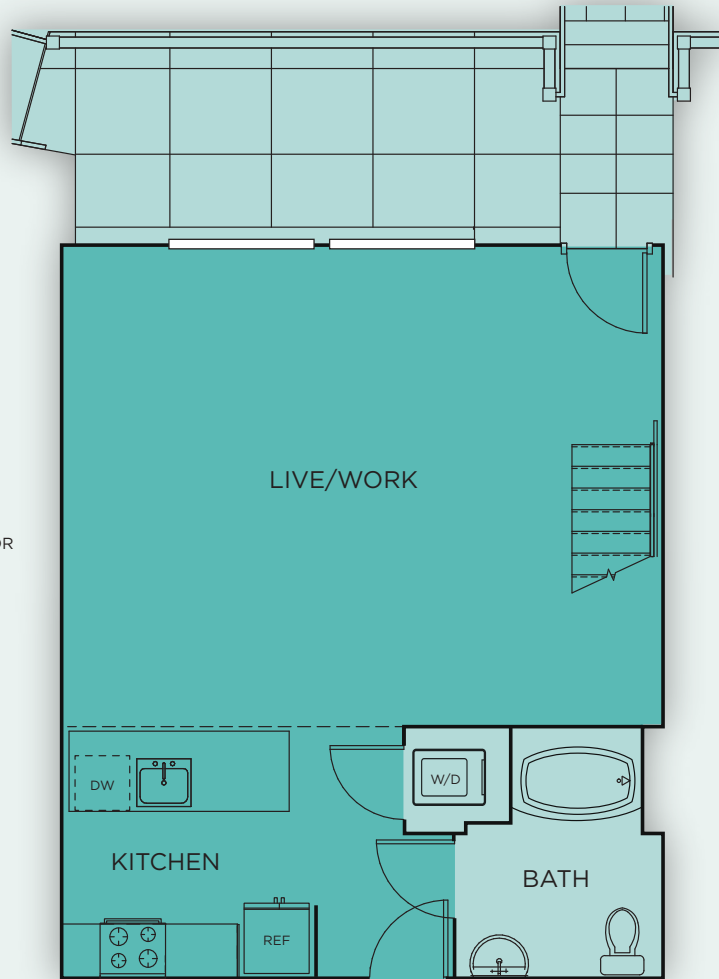
L/W 5 HARLOW

ONE BEDROOM | ONE BATH | 1,009 SF

MEZZANINE



FIRST FLOOR



BROADSTONE
REVEAL

1411 NW QUIMBY STREET, PORTLAND, OR 97209 | 000-000-0000 | REVEALPDX.COM

YOUR SELECTED FLOOR PLAN MAY VARY FROM THIS ILLUSTRATION DUE TO DESIGN CONFIGURATION AND ARCHITECTURAL STYLING. NOT ALL FEATURES ARE AVAILABLE IN EVERY APARTMENT. ALL SQUARE FOOTAGES AND DIMENSIONS ARE APPROXIMATE.

